

OTTAVINO

Obbligo flauto di fila

	pg.
G. Bizet	
- Carmen n.3 (1° e 2° ottavino) – inizio III atto (ottavino)	1
L. v. Beethoven	
- Sinfonia n. 9 (ottavino)	5
P. I. Caikovskij	
- Sinfonia n. 4 – III e IV mov. (ottavino)	7
L. Délibes	
- Coppelia – n.11 Musique des automates (ottavino)	9
A. Ponchielli	
- La Gioconda (ottavino)	12
M. Ravel	
- Concerto in sol per pianoforte (ottavino)	13
G. Rossini	
- Semiramide, Sinfonia (ottavino)	14
- L'Italiana in Algeri, Sinfonia (ottavino)	15
D. Sostakovic	
- Sinfonia n. 6 – I mov. (solo dell'ottavino)	16
- Sinfonia n. 9 (ottavino)	20
G. Verdi	
- Falstaff, inizio seconda parte I atto (ottavino)	21

CARMEN

BIZET

Allegro, movt. de Marche

I
Picc.
II

ppp

ppp

ten. *ten.* *ten.* *ten.*

tr *tr* *tr* *tr*

un peu moins pp

un peu moins pp

A

moins p

moins p

tr *tr* *tr* *tr*

cre - scen - do a po - co

cre - scen - do a po - co

ten. *tr* *tr* *tr* **B**

a poco mf f

a poco mf f

f *f*

f *f*

OTTAVINO

pp

pp

10

George Bizet

CARMEN

N° 11 Canzone

Andantino quasi Allegretto

Flauto

Vla. pizz.
pp

pp

dim.

The image shows a page of musical notation consisting of ten staves. The notation is written in a single system. The first staff begins with a treble clef and a key signature of one sharp (F#). The music features a variety of note values, including eighth and sixteenth notes, and rests. Slurs are used to group notes across several staves. Dynamic markings include *p* (piano), *ppp* (pianissimo), and *dim.* (diminuendo). The word *smorzando* is written below the eighth staff. First and second endings are indicated by the numbers 1 and 2 above the staves. The notation concludes with a double bar line at the end of the tenth staff.

Symphonie Nr. 9

d-moll · D minor
op. 125

331 Allegro assai vivace $\text{♩} = 84$
alla Marcia 1 1 8 Cl. I

Fig. I G.P. G.P. 4 5 6

342 *pp*

350

358 **H**
sempre pp

365

372 *pp*

380 *poco cresc.*

388 **I**

395

401 *poco f*

409  *più f.*

415  *f* *più f.*

422  *ff*

429  *K* *sempre l'istesso tempo* *L* 50 *M* 51

IV. SYMPHONIE

Kleine Flöte

Peter I. Tschalkowsky, Op. 36

III. SCHERZO Pizzicato ostinato

Allegro A 32 B 28 C 14 D 42 Meno mosso
(Ob.) (Fl. 1, 2)

16 11 17

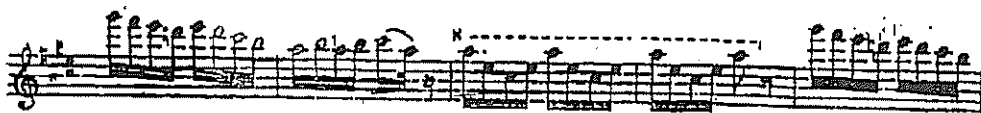
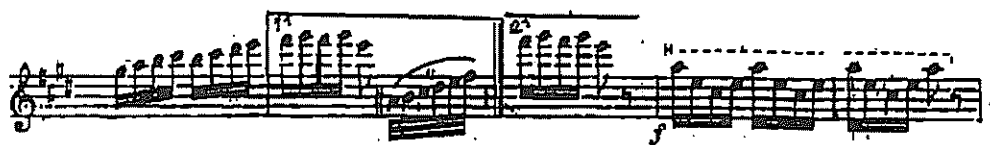
Tempo I 14 F (Kl. 1) 9 F

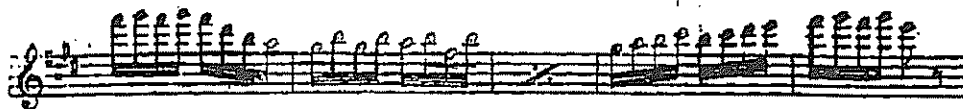
2 G 12 129 H 2 2 2

piu f *mf* *cresc.*

15

The image displays a page of musical notation consisting of ten staves. The notation is written in a single system, likely for a piano or similar instrument. The key signature is one flat (B-flat), and the time signature is not explicitly shown but appears to be 4/4. The music is characterized by complex rhythmic patterns, including sixteenth and thirty-second notes, and frequent use of slurs and accents. Dynamic markings include *ff* (fortissimo) at the beginning and *sempre ff* (sempre fortissimo) on the third staff. The notation is dense and detailed, with many notes and rests. The page is numbered -8- at the bottom.





LA GIOCONDA

A. PONCHIELLI

Allegro vivacissimo

I. e Ott. 
pp leggeriss.



II. e Ott. 
ff



CONCERTO

in Sol for
piano forte & orchestra

OTTAVINO

MAURICE RAVEL

I

Allegramente

Solo

Musical score for Ottavino, Concerto in Sol by Maurice Ravel, Movement I. The score consists of five staves of music. The first staff is marked "Solo" and "Allegramente". The second and third staves continue the melodic line. The fourth staff begins with a first ending bracket labeled "1" and includes dynamic markings "ff" and "cresc.". The fifth staff continues the melodic line and includes a second ending bracket labeled "2" and a "p" dynamic marking.

SEMIRAMIDE

SINFONIA

Allegro vivace

G. ROSSINI

1.º Ott.
mf rinfor. *ff*

Poco mosso
p

Allegro
1.º Ott.
pp

Fl. solo
p *f* *p* *Ott.*

Ott.

Fl. solo
p *f* *p*

Ott. (*Ott.*)
f *p*

L'ITALIANA IN ALGERI
SINFONIA
Allegro

G. ROSSINI

Musical score for L'Italiana in Algeri, Sinfonia, Allegro. The score consists of four staves of music. The first staff begins with a "Solo" marking. The second staff includes "Solo" and "p dolce" markings. The music is written in treble clef with a key signature of one sharp (F#) and a 2/4 time signature.

36 *mp* *ff molto forte* 37

38 *f marc.*

39 8 40 3 1 41 8 *f*

42 *ff*

43 9 44 7 7

45 *clarinetti* 46 *pp*

47 *cresc.* *ff*

71 Solo
clar. basso *sf*

78 *sf*

74 75
f *ff* *ff*
2 13 1 1
Clarinetto or Flauto

76 77
sf 1 11 17 1

80 81
6 13 5
mb *pppp*

SYMPHONY No. 9
1st Movt.

SHOSTAKOVICH

Allegro $\text{♩} = 120$
Picc. Solo $2 \text{ } \text{♩}$

f

2

f

f

f

cresc. *ff*

2nd Movt.

Adagio $\text{♩} = c. 34$
Cor. I Picc. Solo

p

morendo

3rd Movt.

Presto $\text{♩} = 124$

A Picc.

p

cresc. *f*

f

2

FALSTAFF

ATTO I. PARTE I.

Allegro $\text{♩} = 108$

G. VERDI

Musical staff with dynamics *p* and *pp*. Includes markings for first and second endings.

All' agitato $\text{♩} = 140$

Musical staff with dynamics *p* and *ff*.

Poco più mosso

III. e Ott.

Musical staff with dynamics *p* and *ff*.

PARTE II.

All' ogro vivace $\text{♩} = 108$

Ott.

Musical staff with dynamics *mf* and *ff*. Includes an arrow pointing to the section header.

mf ben marcato, brillante

Musical staff with dynamics *sempre stacc.*

Musical staff with dynamics *mf* and *ff*.

Allegro $\text{♩} = 128$

III. e Ott.

Musical staff with dynamics *mf* and *ff*.

Musical staff with dynamics *mf* and *cresc.*

Musical staff with dynamics *f* and *ff*.

Musical staff with dynamics *p* and *ff*.

Musical staff with dynamics *mf*.